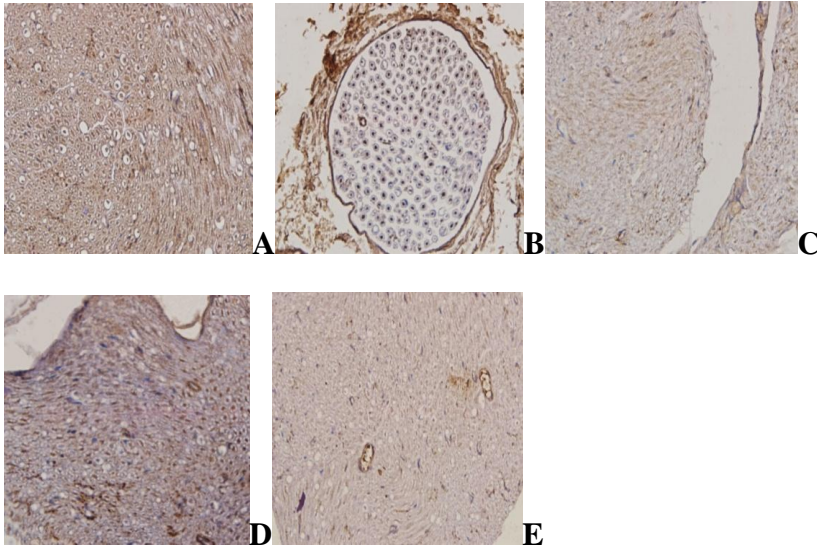


活血解毒方对糖尿病大鼠脊髓和坐骨神经中降钙素基因相关肽及其调控途径的影响

Influences of Huoxue Jiedu Fang on CGRP and regulatory pathway in spinal cord and sciatic nerve in diabetic rats

(正文见第 页 Refer to P)

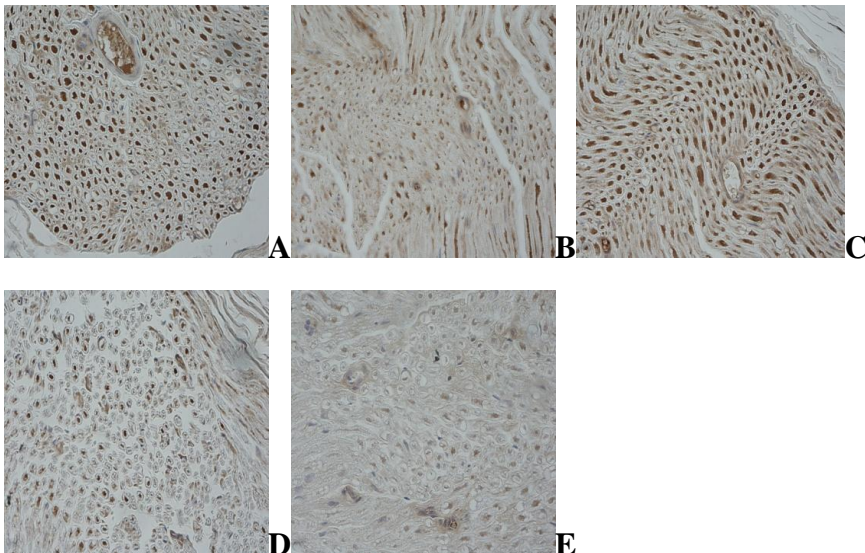


A 正常组; B 模型组; C 活血解毒方高剂量组; D 活血解毒方低剂量组; E 甲钴胺组。

A normal group; B model group; C high-dose group; D low-dose group; E methylcobalamin group.

图 1 各组大鼠坐骨神经 CGRP 免疫组化实验结果 (×400)

Fig. 1 Immunohistochemistry results of sciatic CGRP in rats of all groups (×400)



A 正常组; B 模型组; C 活血解毒方高剂量组; D 活血解毒方低剂量组; E 甲钴胺组。

A normal group; B model group; C high-dose group; D low-dose group; E methylcobalamin group.

图 2 各组大鼠坐骨神经 CaM 免疫组化实验结果 (×400)

Fig. 2 Immunohistochemistry results of sciatic CaM in rats of all groups (×400)

外用含汞中药制剂引起肾功能指标改变与肾脏病理形态学的关系

Relationship between changes of renal function indexes induced by external mercury-containing preparations of Chinese medicinals and renal pathomorphology

(正文见第 页 Refer to P)

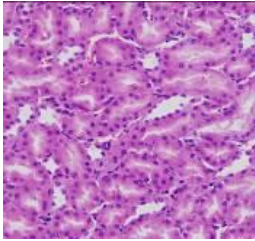
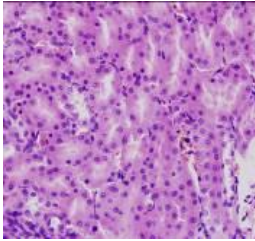
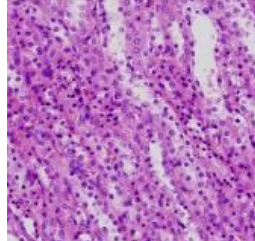
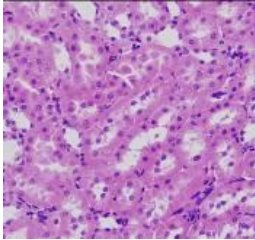
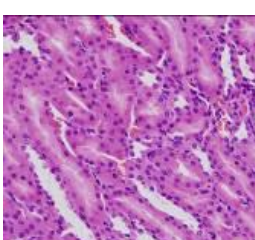
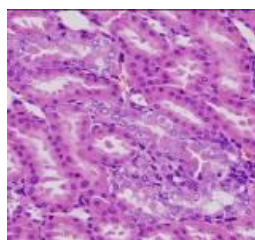
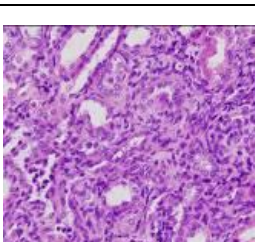
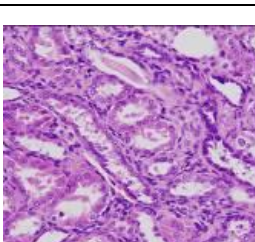
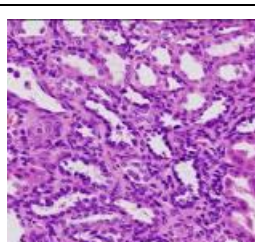
		
破损组：上皮细胞未见明显肿胀，肾小管未见扩张 Control group without epithelial swell and tubule ectasia	溃疡组：上皮细胞轻度肿胀 Model group with mild epithelial swell	溃疡组：远曲小管炎细胞浸润 Model group with inflammatory cell infiltration of DCT
		
基质组：上皮细胞轻度肿胀 Matrix group with mild epithelial swell	E组：上皮细胞轻度肿胀 Group E with mild epithelial swell	D组：上皮细胞肿胀、脱落，核碎裂 Group D with epithelial swell, exfoliation and nuclear fragmentation
		
C组：上皮细胞肿胀、脱落，空泡变，肾小管中度扩张，部分肾小管萎缩 Group C with epithelial swell, exfoliation, vacuolar degeneration, medium tubule ectasia and partial tubule atrophy	B组：上皮细胞肿胀、脱落，管内细胞碎片，肾小管中度扩张，部分肾小管萎缩 Group B with epithelial swell, exfoliation, cell fragments, medium tubule ectasia and partial tubule atrophy	A组：上皮细胞肿胀、脱落，管内大量细胞碎片，肾小管中度扩张，部分肾小管萎缩，间质纤维组织增生 Group A with epithelial swell, exfoliation, a lot of cell fragments, medium tubule ectasia, partial tubule atrophy and interstitial fibrous proliferation

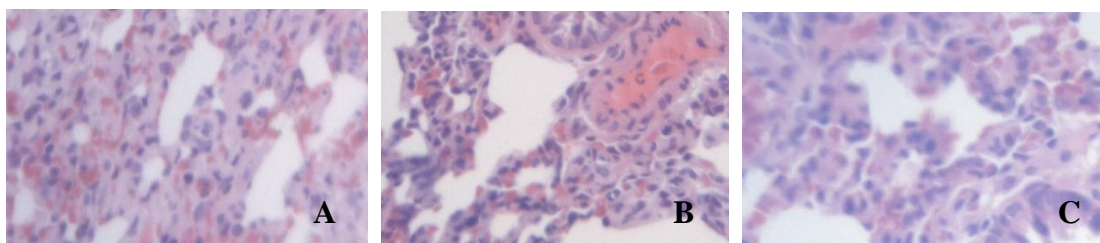
图 1 各组大鼠肾组织病理图片 (HE, ×400)

Fig. 1 Pathological pictures of kidney tissue in rats of all groups (HE, ×400)

黄芪注射液对不同复苏液体复苏后多器官功能障碍综合征中 血管内皮细胞损伤的影响

Influence of Huangqi Injection on vascular endothelial injury in multiple organ dysfunction syndrome after anabiosis with different resuscitation fluid

(正文见第 页 refer to P)



A RL 组; B HTH1 组; C HTH2 组。

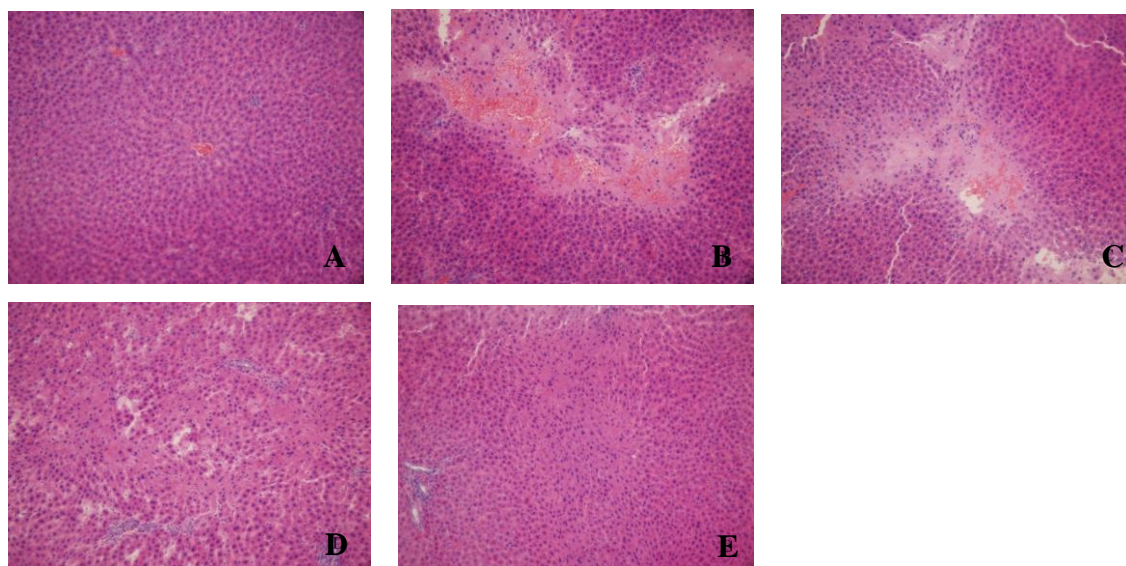
A RL group; B HTH1 group; C HTH2 group.

图 2 各组肺组织病理变化 (HE, $\times 400$)

Fig. 2 Pathological changes of lung tissue in rats of all groups (HE, $\times 400$)

慈菇对异烟肼和利福平致大鼠肝损伤的保护作用 Protective effect of Cigu (*Sagittaria Sagittifolia*) on liver damaged by isoniazid and rifampin in rats

(正文见第 页 refer to P)



A 正常对照组; B 模型组; C 慈菇低剂量组; D 慈菇中剂量组; E 慈菇高剂量组。

A control group; B model group; C low-dose group; D mid-dose group; E high-dose group.

图 1 各组大鼠肝组织病理变化 (HE, $\times 20$)

Fig. 1 Pathological changes of liver tissue in rats in all groups (HE, $\times 20$)