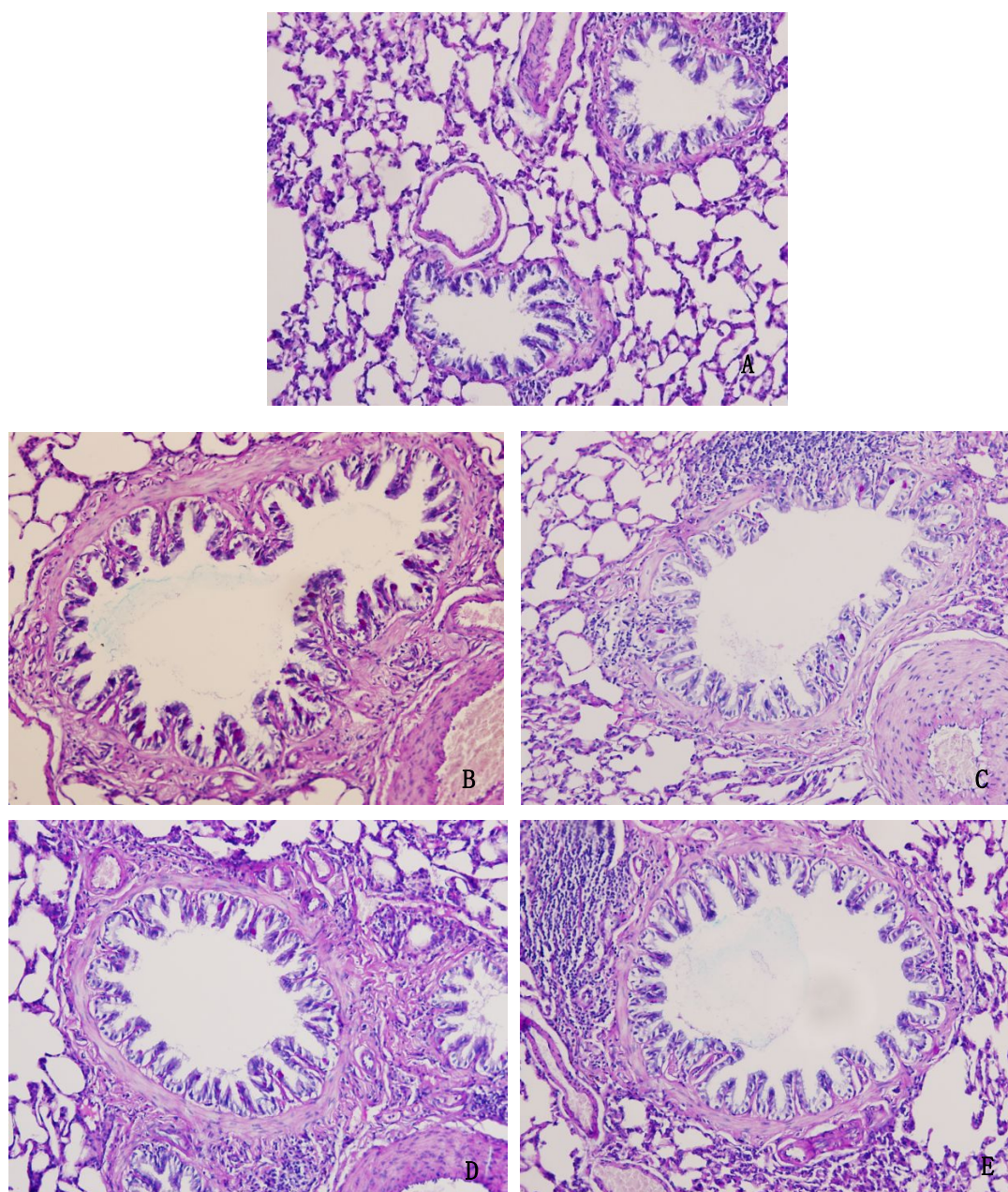


# 清热化痰法对慢性阻塞性肺疾病急性发作痰热证大鼠气道黏液高分泌的影响

## Effects of the method of clearing heat and resolving phlegm on the airway mucus hypersecretion of the AECOPD rat model with phlegm-heat syndrome

(正文见第 603 页 Refer to P603)



A 正常对照组; B 模型组; C 氨溴索组; D 二陈汤组; E 菱苈止嗽煎组。

A normal group; B model group; C ambroxol group; D Erchen decoction group;  
E Louqin Zhisou decoction group.

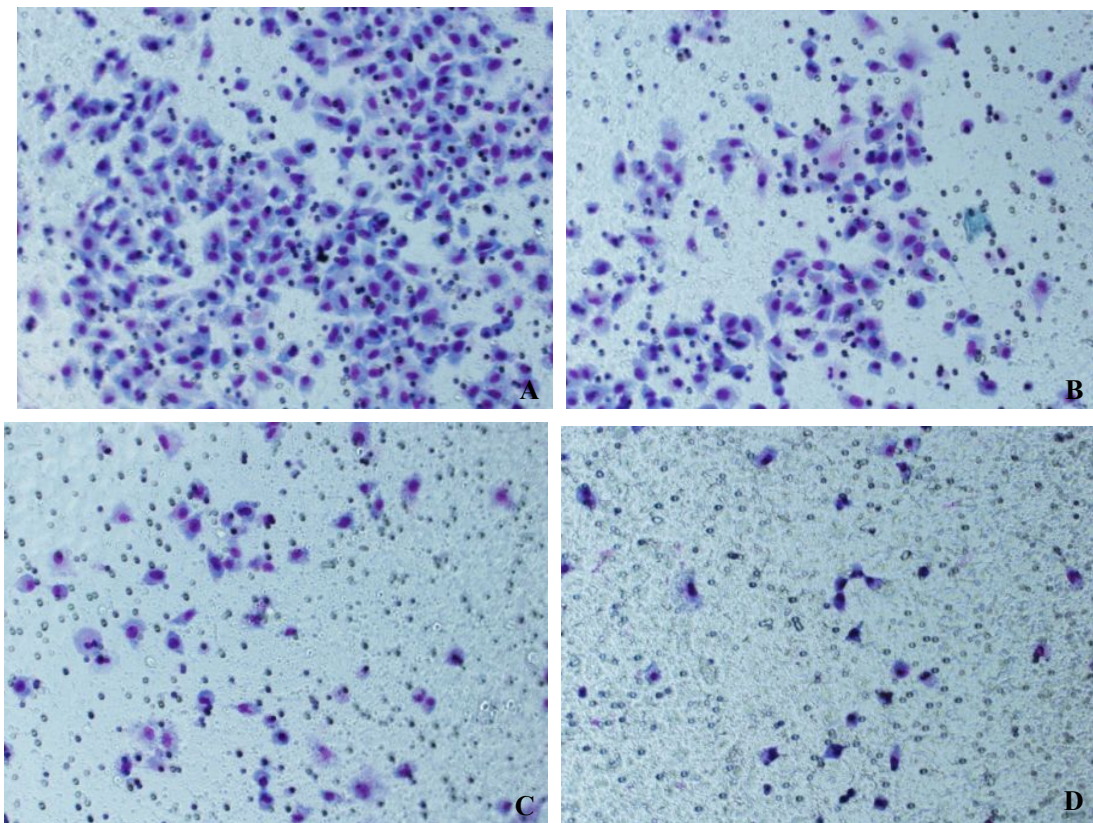
图 1 各组大鼠杯状细胞酸性黏蛋白的分泌 (AB-PAS,  $\times 100$ )

Fig.1 Secretion of acidic mucin in goblet cells of rats of all groups  
(AB-PAS,  $\times 100$ )

## 加味生脉饮含药血清对非小细胞肺癌细胞迁移及黏附的影响

### Effects of serum containing drug of modified Shengmai liquid on migration and adhesion of non small cell lung cancer cell lines

(正文见第 608 页 Refer to P608)



A 10%空白血清组; B 2.5%含药血清组; C 5%含药血清组; D 10%含药血清组。

A 10% CS group; B 2.5% MSL group; C 5% MSL group; D 10% MSL group.

图 1 各组 A549 细胞迁移比较(Giemsa ×400)

Fig.1 Images of migration A549 cells of all groups (Giemsa ×400)