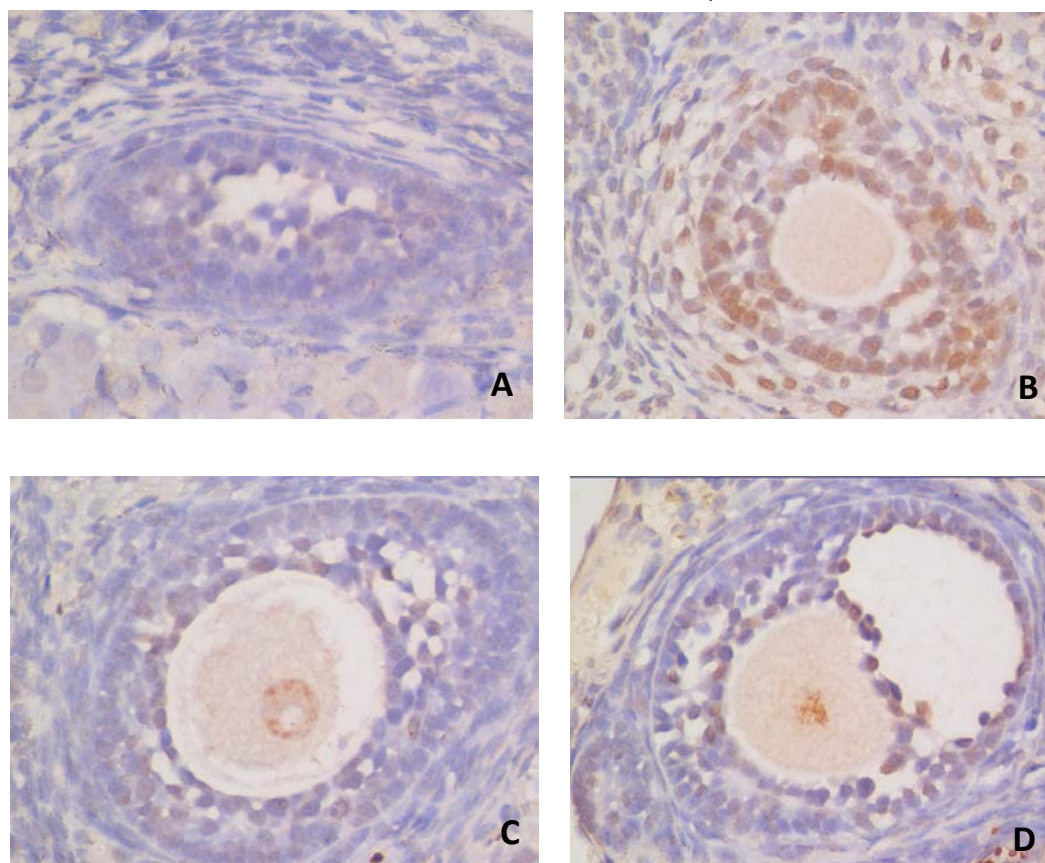


## 补肾养阴法协同干细胞移植治疗化疗后卵巢早衰的实验研究

### Chemotherapy-induced premature ovarian failure rats treated by TCM therapy of tonifying kidney-yin with bone marrow mesenchymal stem cells transplantation

(正文见第 738 页 Refer to P738)



A 空白对照组; B 模型组; C 干细胞干预组; D 干细胞+补肾养阴药物干预组。

A control group; B model group; C BMSCT group; D BMSCT+ZGP group.

图 3 TUNEL 法检测各组卵巢颗粒细胞凋亡( $\times 200$ )

Fig. 3 Ovarian granulosa cell apoptosis of all groups tested by TUNEL assay ( $\times 200$ )

## 脑络欣通方对大鼠脑缺血后纹状体中 5-HT、DA、NE、 5-HIAA 的影响

### Effects of Naoluo Xintong decoction on mRNA expressions of 5-hydroxytryptamine, dopamine, norepinephrine and 5-hydroxyindoleacetic acid in corpus striatum tissues of MCAO rats

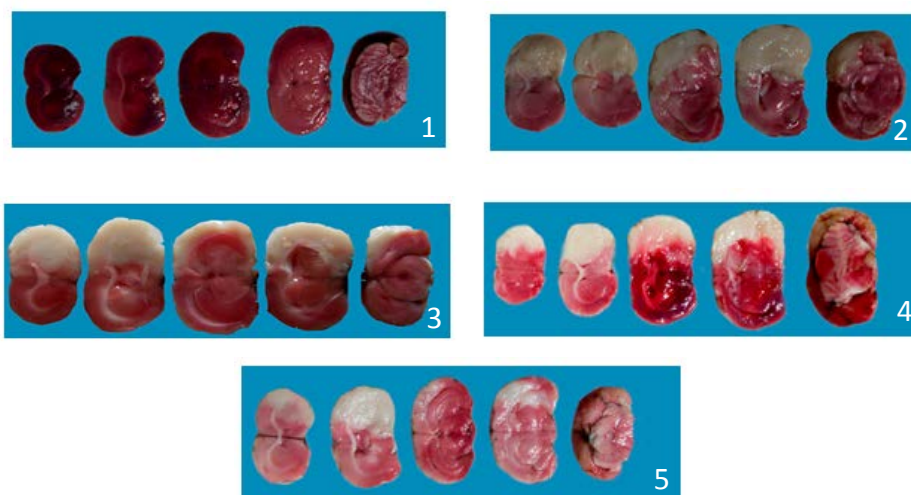
(正文见第 742 页 Refer to P742)



1 假手术组; 2 模型组; 3 治疗 3 d 组; 4 治疗 7 d 组; 5 预处理组。  
1 sham-operated group; 2 model group; 3 three-day-medication group; 4  
seven-day-medication group; 5 premedication group.

图 1 大鼠脑梗死图片 (TTC 染色)

Fig. 1 Images of cerebral infarction of rats of all groups (TTC staining)



1 假手术组; 2 模型组; 3 治疗 3 d 组; 4 治疗 7 d 组; 5 预处理组。  
1 sham-operated group; 2 model group; 3 three-day-medication group; 4  
seven-day-medication group; 5 premedication group.

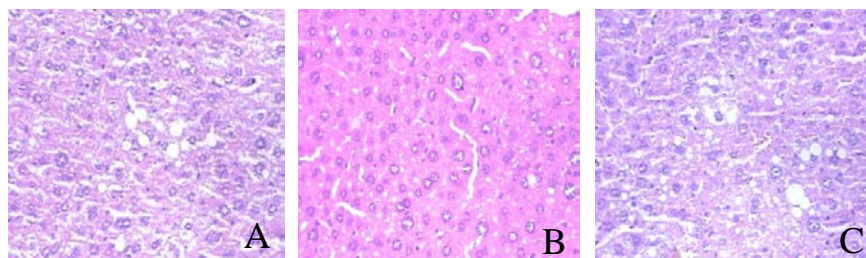
图 2 大鼠冠状位脑梗死层面图 (TTC 染色)

Fig. 2 Coronal sectional images of cerebral infarction of rats of all groups (TTC staining)

# 葛花解醒方对乙醇性 HBV 转基因小鼠肝癌癌前病变细胞周期调控因子表达的影响

## Effects of Gehua Jiecheng decoction on regulation factors of cell cycle in ethanol-type HBV transgenic mice with hepatocellular carcinoma precancerous lesions

(正文见第 747 页 Refer to P747)

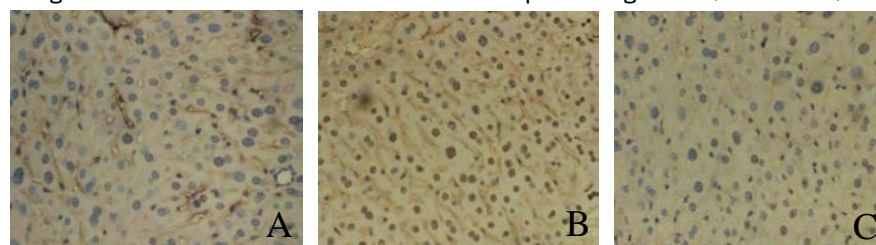


A 对照组; B 模型组; C 治疗组。

A normal group; B model group; C GHJCD group.

图 1 肝组织病理形态学的影响 (HE ×400)

Fig.1 The influence of liver tissue pathological (HE ×400)

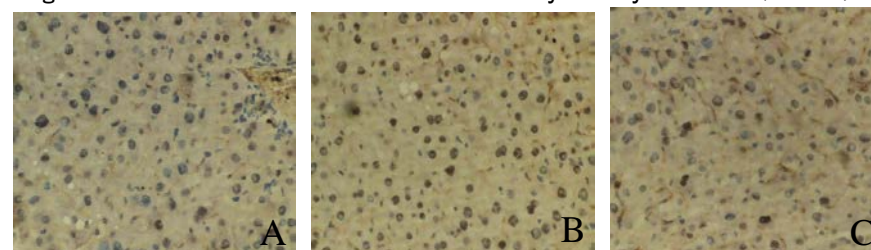


A 对照组; B 模型组; C 治疗组。

A normal group; B model group; C GHJCD group.

图 2. 肝组织 CyclinD1 免疫组化染色 (×400)

Fig.2 Liver tissue immunohistochemistry of Cyclin D1 (×400)

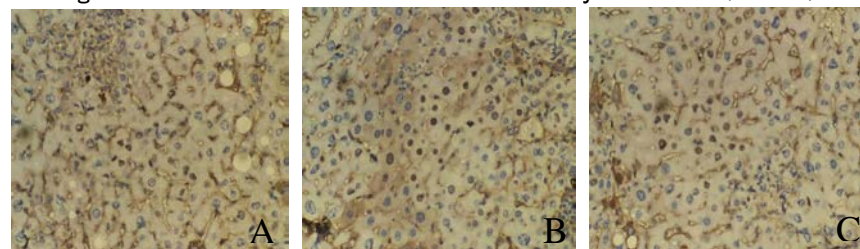


A 对照组; B 模型组; C 治疗组。

A normal group; B model group; C GHJCD group.

图 3. 肝组织 CDK4 免疫组化染色 (×400)

Fig.3 Liver tissue immunohistochemistry of CDK4 (×400)



A 对照组; B 模型组; C 治疗组。

A normal group; B model group; C GHJCD group.

图 4. 肝组织 p27 免疫组化染色 (×400)

Fig.4 Liver tissue immunohistochemistry of p27 (×400)